



# 4 Inch Printer

2 inch printer overleaf

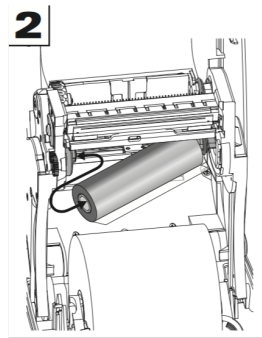
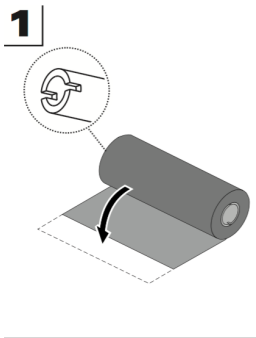
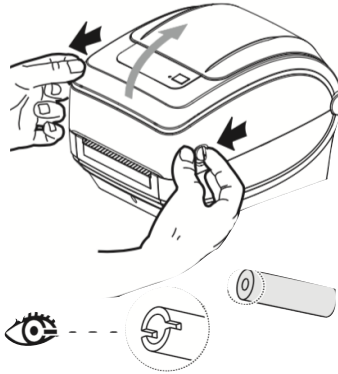
Open the printer by pulling the two green buttons on the side towards you. Remove the old ribbon by sliding the cardboard cores to the right, then pulling the left end towards you.

Discard the old ribbon into the rubbish. Remove the **NEW** ink ribbon from the plastic packet.

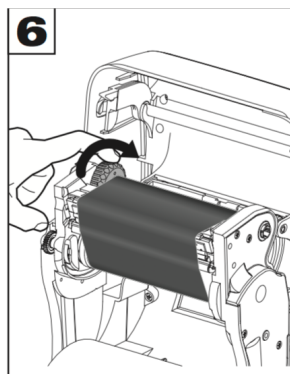
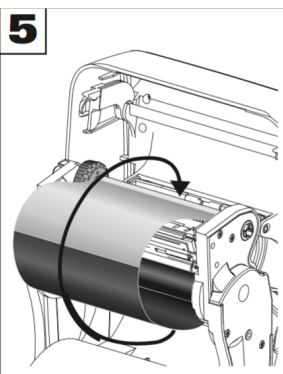
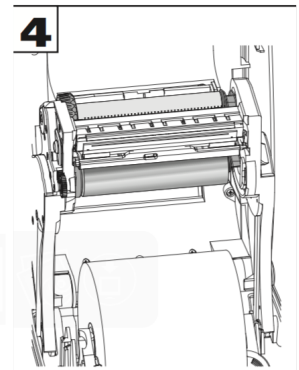
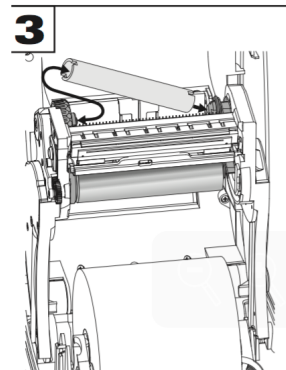
**Note only one end has notches cut out of the cardboard cores. This is the LEFT side**

Slide the core to the right (compressing the spring) and then attach the left end of the core to the left side core holder

Start with the larger roll of the ink ribbon. This goes on the **LOWER** holder. Place the end without notches on the right core holder.



Now insert the core on the other end of the ink ribbon to the **UPPER** set of core holders.



Its very important that the notches cut out of the cardboard core lines up with the lugs on the left side core holders

Roll the green wheel on the left side core holder away from you to take up any slack in the ribbon . Close the printer and start printing.

When you close lid if green light is flashing press button on top once to realign

To view video goto [www.filterfab.com](http://www.filterfab.com) and click *help* tab



Australia  
New Zealand

ph: 07 3205 3844  
ph: 03 379 8131

Email: sales@filterfab.com  
Email: filternz@filterfab.com

