



Germ

STOP!



Safety Program

Protect yourself and others

Infection Control

Drugs and alcohol

Attend work **FREE** from drugs and alcohol



Clean your hands when entering and exiting a nursing home



Wearing full personal protection when handling infectious linen



Prevent Cross Contamination

Keep clean and dirty trolleys separate

Always use clean trolleys for clean linen



Make Safe Choices

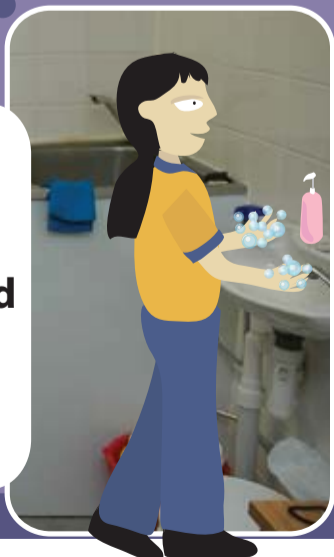
STOP! GERMMS



Soiled linen must **NEVER** enter the clean side of the laundry

Always wash hands when leaving soiled areas

Remove Personal Protection Equipment and wash hands when leaving soiled areas



Know where the STOP buttons are



Wear Personal Protective Equipment

Always wear suitable Personal Protection Equipment (PPE) when sorting soiled linen



www.filterfab.com



tafeSA



take the quiz